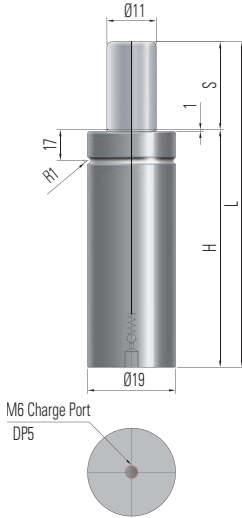


## • 단독형 Self-Contained Type 单独タイプ

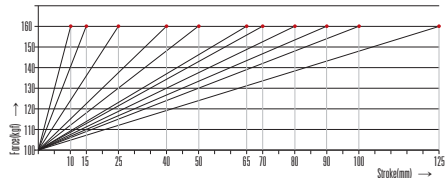


CODE	S (mm)	H (mm)	L (mm)	Force(Kgf)		Pressure (bar)	Volume (cm <sup>3</sup> )	Weight (kg)
				Initial	Final			
PS100-10	10	60	70	100	160	105 (20°C)	5.2	0.10
PS100-15	15	65	80				6.2	0.10
PS100-25	25	75	100				7.9	0.12
PS100-40	40	90	130				10.6	0.13
PS100-50	50	100	150				12.3	0.16
PS100-65	65	115	180				15.0	0.19
PS100-70	70	120	190				15.9	0.19
PS100-80	80	130	210				17.5	0.22
PS100-90	90	140	230				19.1	0.22
PS100-100	100	150	250				21.0	0.23
PS100-125	125	175	300				25.1	0.26

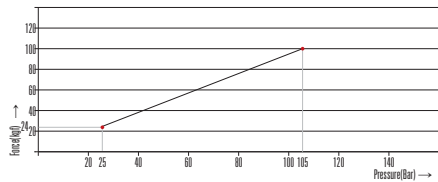
## • 기본정보 Basic Information 基本情報

- Pressure Medium : Nitrogen gas
- Max. Charging Pressure : 105bar / 1522psi
- Min. Charging Pressure : 25bar / 360psi
- Operating Temperature : 0~80°C / 32~ 176°F
- Force Increase by Temperature : 0.33%/°C
- Max. Rod Speed : 1.6m/s
- Piston Rod Area : 0.95cm<sup>2</sup>

## • Force | Stroke ratio



## • Initial force | Charging pressure ratio

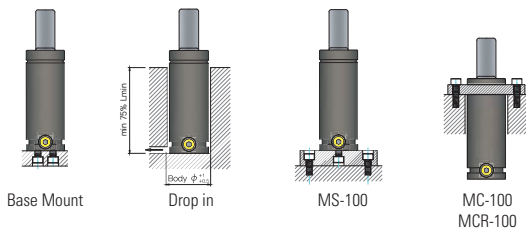


## • 주문방법 Ordering 注文方法

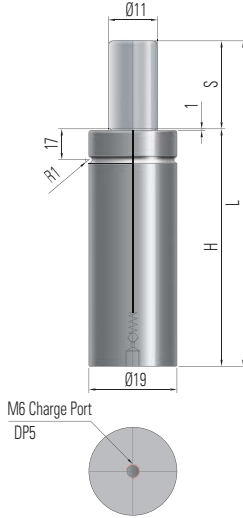
**PS100 - 50 - MS - QT04**

Model      Stroke      Mount      Quantity

## • 사용가능 마운트 Mounting Possibilities 使用可能マウント (Page 20)



## • 단독형 Self-Contained Type 单独タイプ

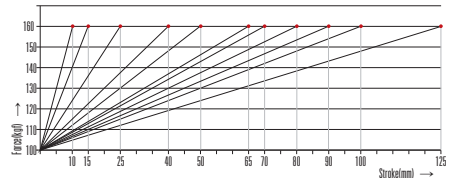


CODE	S (mm)	H (mm)	L (mm)	Force(Kgf)		Pressure (Bar)	Volume (cm <sup>3</sup> )	Weight (kg)
				Initial	Final			
PC100-10	10	55	65	100	160	105 (20°C)	5.1	0.07
PC100-15	15	60	75				6.2	0.08
PC100-25	25	70	95				8.2	0.11
PC100-40	40	85	125				11.2	0.14
PC100-50	50	95	145				13.1	0.16
PC100-65	65	110	175				16.1	0.20
PC100-70	70	115	185				17.2	0.21
PC100-80	80	125	205				19.0	0.22
PC100-90	90	135	225				20.8	0.24
PC100-100	100	145	245				22.9	0.25
PC100-125	125	170	295				27.6	0.26

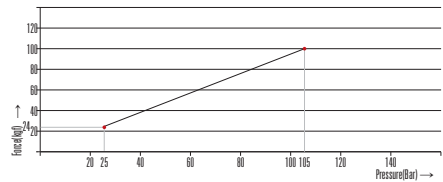
## • 기본정보 Basic Information 基本情報

- Pressure Medium : Nitrogen gas
- Max. Charging Pressure : 105bar / 1522psi
- Min. Charging Pressure : 25bar / 360psi
- Operating Temperature : 0~80°C / 32~ 176°F
- Force Increase by Temperature : 0.33%/°C
- Max. Rod Speed : 1.6m/s
- Piston Rod Area : 0.95cm<sup>2</sup>

## • Force | Stroke ratio



## • Initial force | Charging pressure ratio

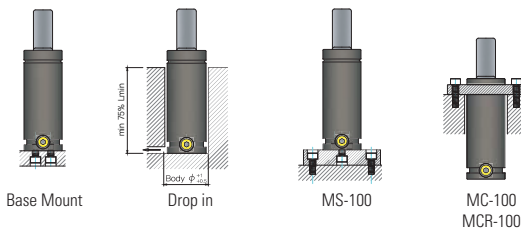


## • 주문방법 Ordering 注文方法

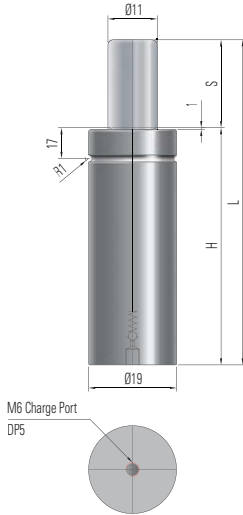
**PC100 - 50 - MS - QT04**



## • 사용가능 마운트 Mounting Possibilities 使用可能マウント (Page 20)

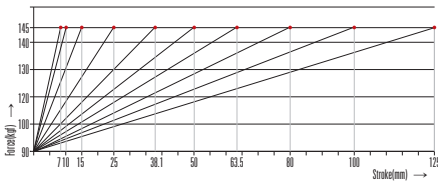


• 단독형 Self-Contained Type 单独タイプ

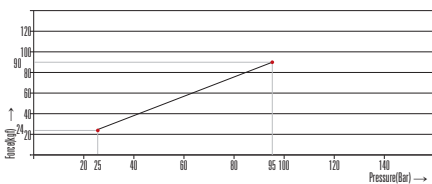


CODE	S (mm)	H (mm)	L (mm)	Volume (cm <sup>3</sup> )	Weight (kg)
PK100-07	7	49	56	4.0	0.07
PK100-10	10	52	62	4.6	0.08
PK100-15	15	57	72	5.6	0.08
PK100-25	25	67	92	7.6	0.08
PK100-38	38.1	80.1	118.2	10.3	0.10
PK100-50	50	92	142	12.7	0.12
PK100-64	63.5	108.5	172	16.0	0.13
PK100-80	80	125	205	19.3	0.14
PK100-100	100	145	245	23.4	0.17
PK100-125	125	170	295	28.5	0.20

• Force | Stroke ratio (95bar charging)

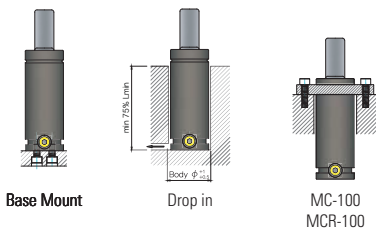


• Initial force | Charging pressure ratio



Force Chart	Force(kgf) / 20°C		Charging Pressure (bar)
	Initial	Final	
Green-GR	30	50	32
Blue-BU	50	80	53
Red-RD	70	110	74
Yellow-YW	90	145	95
Black-BK	25~90	40~145	25~95

• 사용가능 마운트 Mounting Possibilities  
使用可能マウント (Page 20)



• 기본정보 Basic Information 基本情報

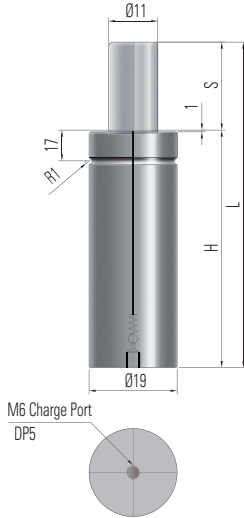
- Pressure Medium : Nitrogen gas
- Max. Charging Pressure : 95bar / 1378psi
- Min. Charging Pressure : 25bar / 360psi
- Operating Temperature : 0-80°C / 32~ 176°F
- Force Increase by Temperature : 0.33%/°C
- Max. Rod Speed : 1.6m/s
- Piston Rod Area : 0.95cm<sup>2</sup>

• 주문방법 Ordering 注文方法

PK100 - 100 - MC - GR - QT04

Model      Stroke      Mount      Force      Quantity

## • 단독형 Self-Contained Type 单独タイプ

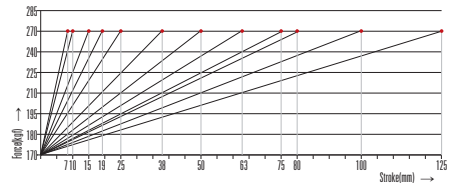


CODE	S (mm)	H (mm)	L (mm)	Force(Kgf)		Pressure (Bar)	Volume (cm <sup>3</sup> )	Weight (kg)
				Initial	Final			
PX170-07	7	37	44	170	270	180 (20°C)	2.0	0.05
PX170-10	10	40	50				2.6	0.06
PX170-15	15	45	60				3.6	0.07
PX170-19	19	49	68				4.4	0.08
PX170-25	25	55	80				5.6	0.09
PX170-38	38	68	106				8.3	0.11
PX170-50	50	80	130				10.7	0.13
PX170-63	63	93	156				13.4	0.15
PX170-75	75	110	185				16.6	0.17
PX170-80	80	115	195				17.7	0.18
PX170-100	100	135	235				21.7	0.22
PX170-125	125	160	285				26.8	0.26

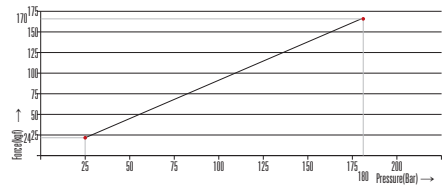
## • 기본정보 Basic Information 基本情報

- Pressure Medium : Nitrogen gas
- Max. Charging Pressure : 180bar / 2610psi
- Min. Charging Pressure : 25bar / 360psi
- Operating Temperature : 0~80°C / 32~ 176°F
- Force Increase by Temperature : 0.33%/°C
- Max. Rod Speed : 1.6m/s
- Piston Rod Area : 0.95cm<sup>2</sup>

## • Force | Stroke ratio



## • Initial force | Charging pressure ratio

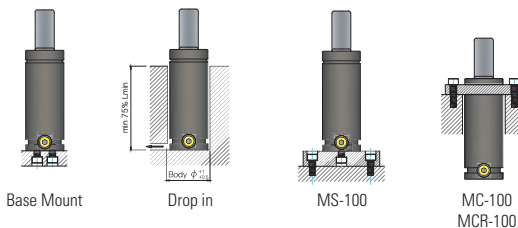


## • 주문방법 Ordering 注文方法

PX170 - 50 - MS - QT04



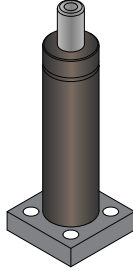
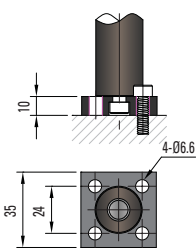
## • 사용가능 마운트 Mounting Possibilities 使用可能マウント (Page 20)



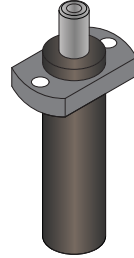
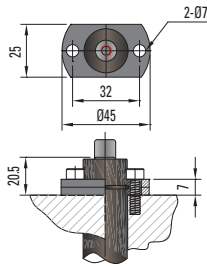
# 100 Series Mount base



• MS-100



• MC-100



• MCR-100

