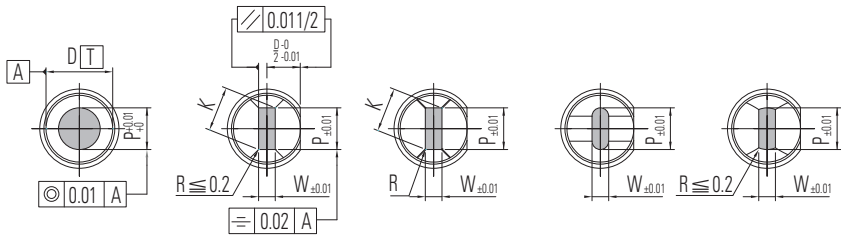


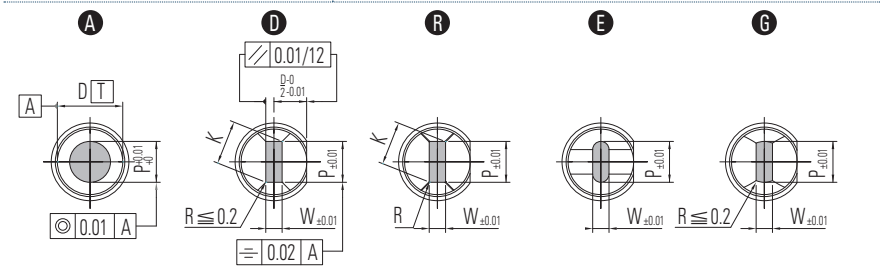
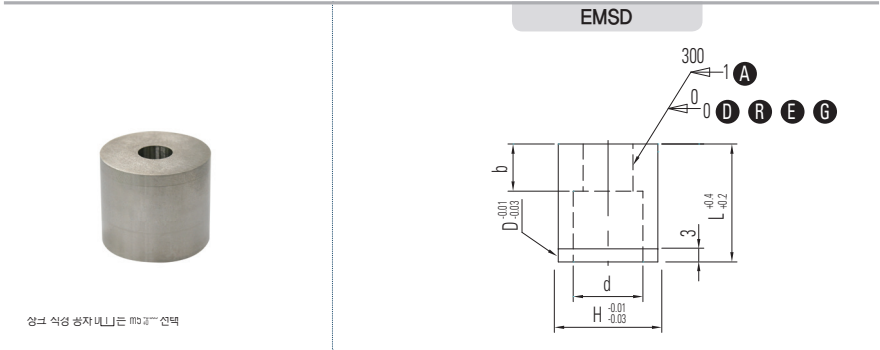
상크 직경 공차 ± 0.005 는 m5 내⁵ 선택



D 공차			Catalog No		L				A				DREG				R														
D	m5	+0.005 0	Type	D	L				min. P max.		P-Kmax.		P-Wmin.		b		d		H		T										
6	+0.009 +0.004	+0.005 0	A D R E G	6	16 20 22 25 28 30 32 35	1.00-3.00	3.00	1.00	0.15 ~ W/2 미만 R만	3	3.4	9	5																		
8	+0.012 +0.006			8	16 20 22 25 28 30 32 35 40	1.00-4.00	4.00	1.00														4	4.4	11							
10	+0.015 +0.007			10	16 20 22 25 28 30 32 35 40 <45>	2.00-6.00	6.00	1.20																	6	6.4	13				
13	+0.017 +0.008			13	16 20 22 25 28 30 32 35 40 <45>	3.00-8.00	8.00	1.50																				8.4	16		
16	+0.020			16	16 20 22 25 28 30 32 35 40 <45>	5.00-10.00	10.00	2.00																						10.6	19
20	+0.024 +0.011			<20>	16 20 22 25 28 30 32 35 40 <45>	7.00-12.00	12.00	3.00																							
22		<22>	16 20 22 25 28 30 32 35 40 <45>	8.00-14.00	14.00	3.00	14.6	25																							
25		<25>	16 20 22 25 28 30 32 35 40 <45>	10.00-16.00	16.00	3.00			16.6	28																					
32		<32>	16 20 22 25 28 30 32 35	15.00-20.00	20.00	4.00	20.6	35																							
38	+0.020	<38>	16 20 22 25 30 35	19.00-26.00	26.00	5.00			26.6	41																					
45	+0.009	<45>	20 22 25 30 35	25.00-35.00	35.00	6.00	36.0	48																							
50		<50>	20 22 25 30 35	33.00-40.00	40.00	7.00			41.0	53																					
56		<56>	20 22 25 30 35	38.00-45.00	45.00	8.00	46.0	59																							

• 주문방법 Ordering 注文方法

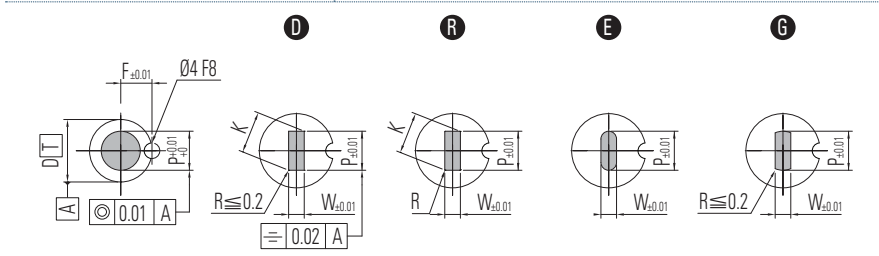
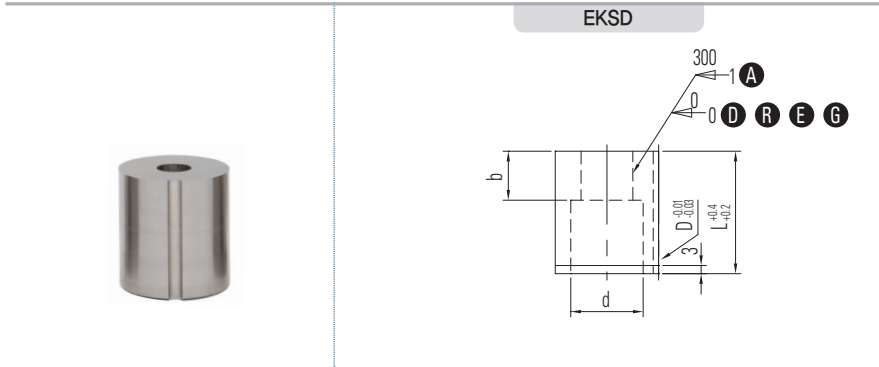
주문예 ORDER **Catalog No.** - **L** - **P** - **W** - **R**
 EMHD - 30 - P7.00 - -



D 공차		Catalog No	L	A			D R E G		R	b	d
D	m5			min. P	max.	P-Kmax.	P-Wmin.	R			
6	+0.013 +0.008	+0.005 0 Type D L EMSD A D R E G <Dn5> EMSD A D R E G	<6> 16 20 22 25 28 30 32 35	1.00 ~ 3.00	-	-	0.15 ~ W/2 미만 R만	3	3.4		
8	+0.016 +0.010		8 16 20 22 25 28 30 32 35 <40>	1.00 ~ 4.00	4.00	1.00				4	4.4
10	+0.020 +0.012		10 16 20 22 25 28 30 32 35 <40>	2.00 ~ 6.00	6.00	1.20					
13			13 16 20 22 25 28 30 32 35 <40>	3.00 ~ 8.00	8.00	1.50		8.4	10.6		
16			16 16 20 22 25 28 30 32 35 <40>	5.00 ~ 10.00	10.00	2.00				12.6	14.6
20			<20> 16 20 22 25 28 30 32 35 <40>	7.00 ~ 12.00	12.00	3.00		16.6	20.6		
22	+0.024 +0.015		<22> 16 20 22 25 28 30 32 35 <40>	8.00 ~ 14.00	14.00	3.00				26.6	36.0
25			<25> 16 20 22 25 28 30 32 35 <40>	10.00 ~ 16.00	16.00	3.00		41.0	46.0		
32			<32> 16 20 22 25 28 30 32 35	15.00 ~ 20.00	20.00	4.00				8	26.6
38	+0.028		<38> 16 20 22 25 30 35	19.00 ~ 26.00	26.00	5.00		36.0	41.0		
45	+0.017		<45> 20 22 25 30 35	25.00 ~ 35.00	35.00	6.00				46.0	46.0
50			<50> 20 22 25 30 35	33.00 ~ 40.00	40.00	7.00		8	26.6		
56	+0.033 +0.020		<56> 20 22 25 30 35	38.00 ~ 45.00	45.00	8.00				36.0	41.0

• 주문방법 Ordering 注文方法

주문예 ORDER - - - -
 EMSD13 - 30 - P7.00 - -



D 공차	Catalog No	L							b	d	F	
		D	Type	A								R
				min. P	max. P	D R E G	R					
10	EKSD A D R E G	10	16 20 22 25 28 30 32 35	2.00~6.00	6.00	1.20	0.15 ~ W/2 미만 R 만	8	6	6.4	6	
13		13	16 20 22 25 28 30 32 35	3.00~8.00	8.00	1.50			8.4	7.5		
16		16	16 20 22 25 28 30 32 35	5.00~10.00	10.00	2.00			10.6	8		
20		20	16 20 22 25 28 30 32 35	7.00~12.00	12.00	3.00			12.6	10		
22		22	16 20 22 25 28 30 32 35	8.00~14.00	14.00	3.00			14.6	11		
25		25	16 20 22 25 28 30 32 35	10.00~16.00	16.00	3.00			16.6	12.5		
32		32	16 20 22 25 28 30 32 35	15.00~20.00	20.00	4.00			20.6	16		
38		38	16 20 22 25 30 35	19.00~26.00	26.00	5.00			26.6	19		
45		45	20 22 25 30 35	25.00~35.00	35.00	6.00			36.0	22.5		
50		50	20 22 25 30 35	33.00~40.00	40.00	7.00			41.0	25		
56		56	20 22 25 30 35	38.00~45.00	45.00	8.00			46.0	28		

• 주문방법 Ordering 注文方法

주문예 ORDER **Catalog No.** - **L** - **P** - **W** - **R**
 EKSD13 - 30 - P6.00 - W2.40 - R1.00